

Towed PAM System

Our flagship Passive Acoustic Monitoring system is extensively deployed worldwide. It is robust, reliable and available at short notice in a number of configurations.



APPLICATIONS

MARINE MAMMAL
MITIGATION

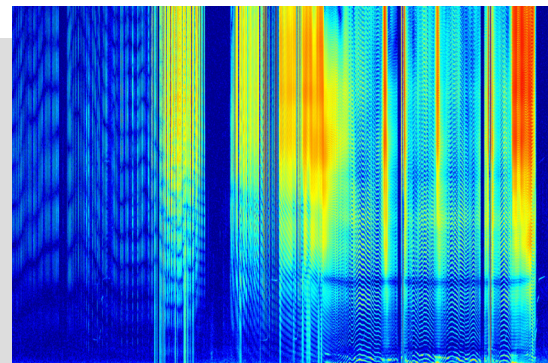
MARINE MAMMAL
MONITORING



Towed PAM is able to detect, localise and track vocalising marine mammals in real-time. It is a vital mitigation tool during hours of darkness and poor visibility.

The base system comprises a towed array cable, deck cable, electronic processing unit including data acquisition devices, computer and headphones. The physical spacing of hydrophones and the frequency response of the system provides optimal performance and the acoustic detection of species of interest. PAMGuard software is integrated as standard. Equipment is provided with 100% back-up.

The system can be readily configured to suit the project requirements. The array section includes either four or six hydrophones arranged in pairs of calibrated hydrophone channels with low noise preamplifiers, identical sensitivity and frequency response. An array depth sensor is integrated at the rear of the array. A 230 m heavy tow cable with a detachable 20-25 m array section may be preferred for harsh environments. A networked PAM station is available to enable the PAM system to be monitored and controlled from the most convenient location onboard.



Specification

Towed cable length: 250 m

Hydrophone elements: 4 or 6

System frequency response: within the range 10 Hz to 200 kHz

Power Requirement: 110 V or 240 V AC

Weight: 3 pallets, 400 kg