

# PRODUCT DATASHEET

www.seiche.com  
info@seiche.com  
+44 (0)1409 404050



## TOWED PAM SYSTEM

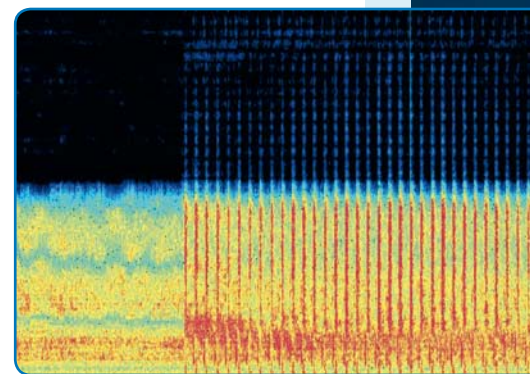
Our flagship Passive Acoustic Monitoring system is extensively deployed worldwide. It is robust, reliable and available at short notice in a number of configurations.

Towed PAM is able to detect, localise and track vocalising marine mammals in real-time. It is vital for mitigation during hours of darkness and poor visibility.

The base system comprises an array cable of 250m, deck cable, electronics processing unit, computer and headphones. Equipment is provided with 100% back-up. PAMGuard software is integrated as standard to aid detection and localisation of marine mammals.

The system can readily be configured to suit the project. A heavy tow 230m cable with a detachable array section of 20m may be preferred for harsh environments.



A networked system can enable monitoring from the most convenient location onboard. Frequency sensitivity, within a range of 10 Hz and 200 kHz, can also be customised for species of interest and optimal performance.



### SPECIFICATIONS

Hydrophone elements: 4
Acoustic sensitivity: 10 Hz to 200 kHz
Power Requirement: 110 VAC, 240 VAC
Weight: 3 pallets, 400kg

### APPLICATIONS

-  Marine mammal mitigation
-  Marine mammal monitoring